



2019

Viti testa a martello complete di dado S340 e rondella S370

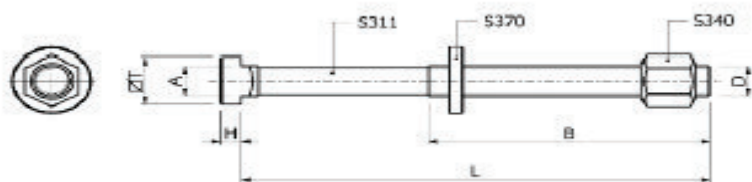
Materiale: UNI 42CrMo4
A norma ASTM A193-B7 Classe 10.9.

S310

DIN 787

Hammerhead bolts complete with nut S340 and washer S370

Material: UNI 42CrMo4
According to standard
ASTM A193-B7 Class 10.9.



Code	D	L	B	A	T	H		gr
S310.10040	M10	40	30	9,7	15	6	10	60
S310.10060		63	45					80
S310.10080		80	55					85
S310.10100		100	60					100
S310.10125		125	75					105
S310.10150		150	100					120
S310.10170		170	100					130
S310.12050	M12	50	35	11,7	18	7	12	110
S310.12060		63	45					115
S310.12080		80	55					125
S310.12100		100	60					140
S310.12125		125	75					150
S310.12150		150	100					180
S310.12170		170	100					195
S310.12200		200	120					210
S310.14060	M14	63	40	13,7	22	8	14	160
S310.14080		80	55					180
S310.14100		100	65					215
S310.14125		125	75					240
S310.14150		150	100					270
S310.14170		170	100					290
S310.14200		200	125					315
S310.14230		230	150					345
S310.16060	M16	63	45	15,7	25	9	16	230
S310.16080		80	55					250
S310.16100		100	63					270
S310.16125		125	75					315
S310.16150		150	100					345
S310.16160		160	100					360
S310.16170		170	100					370
S310.16200		200	125					405
S310.16230		230	150					450
S310.16250		250	150					470

N.B. : Si eseguono su richiesta misure non a catalogo

Code	D	L	B	A	T	H		gr
S310.18080	M18	80	55	17,7	28	10	18	315
S310.18100		100	65					335
S310.18125		125	85					410
S310.18150		150	100					450
S310.18170		170	100					480
S310.18200		200	125					530
S310.18230		230	150					560
S310.20080	M20	80	55	19,7	32	12	20	440
S310.20100		100	63					490
S310.20125		125	85					540
S310.20150		150	100					600
S310.20160		160	110					620
S310.20170		170	100					625
S310.20200		200	125					700
S310.20230		230	150					820
S310.20315		315	190					950
S310.22080	M22	80	55	21,7	35	14	22	540
S310.22100		100	63					580
S310.22125		125	85					630
S310.22150		150	100					710
S310.22170		170	100					790
S310.22200		200	125					870
S310.22230		230	150					890
S310.24080	M24	80	55	23,7	40	16	24	720
S310.24100		100	70					810
S310.24125		125	85					870
S310.24150		150	100					980
S310.24160		160	110					1010
S310.24170		170	100					1040
S310.24200		200	125					1170
S310.24230		230	150					1220
S310.24250		250	150					1230
S310.27160	M27	160	110	27,7	44	18	28	1170
S310.27200		200	125					1320
S310.27250		250	150					1490
S310.27315		315	240					1860

N.B. : Other sizes can be supplied on request



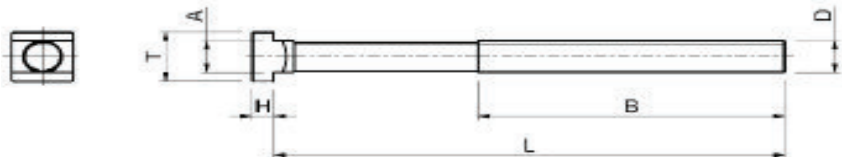
2019

Viti testa a martello singole

Materiale: UNI 42CrMo4
A norma ASTM A193-B7 Classe 10.9.

S311**DIN 787****Single hammerhead bolts**

Material: UNI 42CrMo4
According to standard
ASTM A193-B7 Class 10.9.



Code	D	L	B	A	T	H		gr	Code	D	L	B	A	T	H		gr
S311.10040	M10	40	30	9,7	15	6	10	30	S311.18080	M18	80	55	17,7	28	10	18	185
S311.10060		63	45					50	S311.18100		100	65					203
S311.10080		80	55					55	S311.18125		125	85					280
S311.10100		100	60					70	S311.18150		150	100					320
S311.10125		125	75					75	S311.18170		170	100					350
S311.10150		150	100					90	S311.18200		200	125					400
S311.10170		170	100					100	S311.18230		230	150					430
S311.12050	M12	50	35	11,7	18	7	12	60	S311.20080	M20	80	55	19,7	32	12	20	290
S311.12060		63	45					65	S311.20100		100	63					340
S311.12080		80	55					75	S311.20125		125	85					390
S311.12100		100	60					90	S311.20150		150	100					450
S311.12125		125	75					110	S311.20160		160	110					470
S311.12150		150	100					130	S311.20170		170	100					475
S311.12170		170	100					145	S311.20200		200	125					550
S311.12200		200	120					160	S311.20230		230	150					670
S311.14060	M14	63	40	13,7	22	8	14	80	S311.20315		315	190					800
S311.14080		80	55					100	S311.22080	M22	80	55	21,7	35	14	22	330
S311.14100		100	65					135	S311.22100		100	63					370
S311.14125		125	75					160	S311.22125		125	85					430
S311.14150		150	100					190	S311.22150		150	100					500
S311.14170		170	100					210	S311.22170		170	100					590
S311.14200		200	125					235	S311.22200		200	125					660
S311.14230		230	150					265	S311.22230		230	150					680
S311.16060	M16	63	45	15,7	25	9	16	140	S311.24080	M24	80	55	23,7	40	16	24	450
S311.16080		80	55					160	S311.24100		100	70					550
S311.16100		100	63					180	S311.24125		125	85					600
S311.16125		125	75					225	S311.24150		150	100					710
S311.16150		150	100					255	S311.24160		160	110					740
S311.16160		160	100					270	S311.24170		170	100					770
S311.16170		170	100					280	S311.24200		200	125					900
S311.16200		200	125					315	S311.24230		230	150					935
S311.16230		230	150					360	S311.24250		250	150					995
S311.16250		250	150					380	S311.27160	M27	160	110	27,7	44	18	28	800
									S311.27200		200	125					950
									S311.27250		250	150					1120
									S311.27315		315	240					1490

N.B. : Si eseguono su richiesta misure non a catalogo

N.B. : Other sizes can be supplied on request



2019

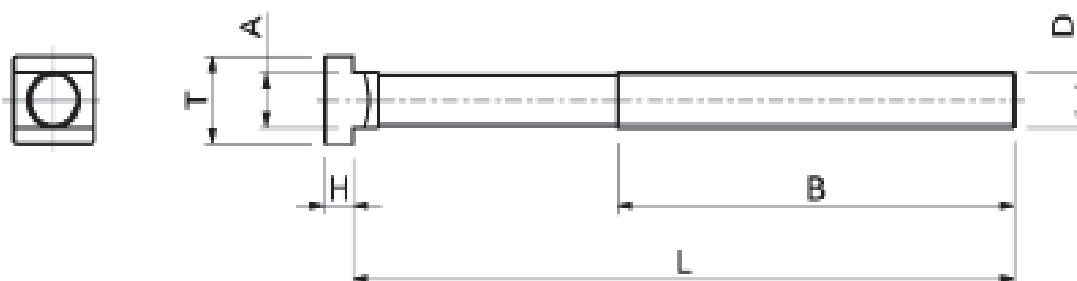
**Viti testa
a martello singole
Testa maggiorata**

Materiale: UNI 42CrMo4
A norma ASTM A193-B7 Classe 10.9

S312

**Single
hammerhead bolts
Increased Head**

Material: UNI 42CrMo4
According to standard
ASTM A193-B7 Class 10.9



Code	D	L	B	A	T	H		gr
S312.16090	M16	93	55	15,7	28	12	16	170
S312.16120		120	75					220
S312.16150		150	100					255
S312.16200		200	125					315
S312.16225		225	160					355
S312.16250		250	160					380
S312.16300		300	180					460

Code	D	L	B	A	T	H		gr
S312.18120	M18	120	75	17,7	35	14	18	270
S312.18150		150	100					320
S312.18200		200	125					400
S312.18225		225	150					420
S312.18250		250	150					470
S312.18300		300	190					565
S312.20120	M20	120	75	19,7	40	16	20	375
S312.20150		150	100					450
S312.20200		200	125					550
S312.20225		255	150					655
S312.20250		250	150					730
S312.20300		300	190					765
S312.24120	M24	120	75	23,7	44	20	24	580
S312.24150		150	100					710
S312.24200		200	125					900
S312.24225		225	150					915
S312.24250		250	150					995
S312.24300		300	190					1200

N.B. : Si eseguono su richiesta misure non a catalogo

N.B. : Other sizes can be supplied on request



2019

S315

DIN 787

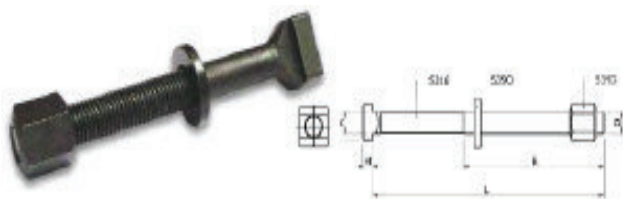
**Viti testa a martello complete di dado S340 e rondella S390
Cava maggiorata**

Materiale: UNI 42CrMo4

A norma ASTM A193-B7 Classe 10.9.

**Hammerhead bolts complete with nut
S340 and washer S390
Increased slot**

Material: UNI 42CrMo4. According to standard: ASTM A193-B7.



Code	D	L	B	A	T	H		gr
S315.12050	M12	50	35	13,7	22	8	14	145
S315.12063		63	45					150
S315.12080		80	55					165
S315.12125		125	75					185
S315.12200		200	120					245
S315.14063	M14	63	45	15,7	25	9	16	210
S315.14100		100	63					245
S315.14160		160	100					305
S315.14230		230	150					370
S315.16063	M16	63	45	17,7	28	10	18	290
S315.16080		80	55					315
S315.16100		100	63					335
S315.16125		125	85					380
S315.16160		160	100					410
S315.16200		200	125					475
S315.16230		230	150					520
S315.16250		250	150					560
S315.20080	M20	80	55	21,7	35	14	22	515
S315.20100		100	63					565
S315.20125		125	85					615
S315.20160		160	110					675
S315.20200		200	125					755
S315.20230		230	150					830
S315.20315		315	190					1010
S315.24100	M24	100	70	27,7	44	18	28	1020
S315.24125		125	85					1110
S315.24160		160	110					1170
S315.24200		200	125					1320
S315.24230		230	150					1430
S315.24250		250	150					1490
S315.24315		315	240					1860
S315.30160	M30	160	110	35,7	53	22	36	1940
S315.30200		200	134					2120
S315.30250		250	149					2360
S315.30315		315	190					2670

N.B. : Si eseguono su richiesta misure non a catalogo

S316

DIN 787

**Viti testa a martello
singole
Cava maggiorata**

Materiale: UNI 42CrMo4

A norma ASTM A193-B7 Classe 10.9.

**Single hammerhead
bolts
Increased slot**

Material: UNI 42CrMo4 According to standard: ASTM A193-B7.



Code	D	L	B	A	T	H		gr
S316.12050	M12	50	35	13,7	22	8	14	80
S316.12063		63	45					85
S316.12080		80	55					100
S316.12125		125	75					120
S316.12200		200	120					180
S316.14063	M14	63	45	15,7	25	9	16	125
S316.14100		100	63					160
S316.14160		160	100					220
S316.14230		230	150					285
S316.16063	M16	63	45	17,7	28	10	18	160
S316.16080		80	55					185
S316.16100		100	63					205
S316.16125		125	85					250
S316.16160		160	100					280
S316.16200		200	125					345
S316.16230		230	150					390
S316.16250		250	150					430
S316.20080	M20	80	55	21,7	35	14	22	330
S316.20100		100	63					380
S316.20125		125	85					430
S316.20160		160	110					490
S316.20200		200	125					570
S316.20230		230	150					645
S316.20315		315	190					820
S316.24100	M24	100	70	27,7	44	18	28	650
S316.24125		125	85					740
S316.24160		160	110					800
S316.24200		200	125					950
S316.24230		230	150					1060
S316.24250		250	150					1120
S316.24315		315	240					1490
S316.30160	M30	160	110	35,7	53	22	36	1300
S316.30200		200	134					1480
S316.30250		250	149					1720
S316.30315		315	190					2030

N.B. : Other sizes can be supplied on request