



2019

Tasselli per cave a "T"

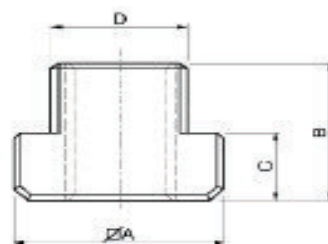
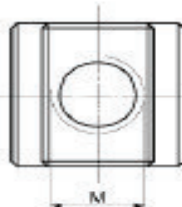
Materiale: acciaio classe 8.8

S360

DIN 508 - UNI 5531

Nuts for T-slots

Material: steel class 8.8



Code	M	D	A	B	C		gr
S360.06008	6	7,7	13x13	10	6	8	9
S360.08010	8	9,7	15x15	12	6	10	12
S360.08012	8	11,7	18x18	14	7	12	22
S360.10012	10						20
S360.08014	8						41
S360.10014	10	13,7	22x22	16	8	14	37
S360.12014	12						35
S360.08016	8						61
S360.10016	10	15,7	25x25	18	9	16	59
S360.12016	12						56
S360.14016	14						52
S360.08018	8						91
S360.10018	10						87
S360.12018	12	17,7	28x28	20	10	18	82
S360.14018	14						70
S360.16018	16						60

Code	M	D	A	B	C		gr
S360.16020	16	19,7	32x32	24	12	20	110
S360.18020	18						100
S360.16022	16						176
S360.18022	18	21,7	35x35	28	14	22	163
S360.20022	20						155
S360.16024	16						260
S360.20024	20	23,7	40x40	32	16	24	235
S360.22024	22						220
S360.16028	16						383
S360.20028	20	27,7	44x44	36	18	28	355
S360.22028	22						340
S360.24028	24						322
S360.24030	24	29,7	48x48	38	19	30	440
S360.27032	27	31,6	50x50	40	20	32	460
S360.30036	30	35,6	54x54	44	22	36	590
S360.36042	36	41,6	65x65	52	26	42	1010

Tasselli per cave a "T" senza foro

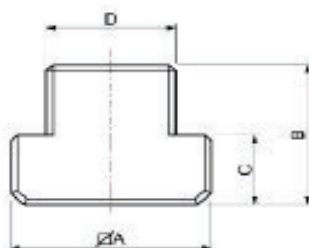
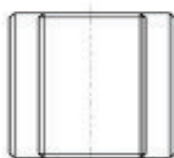
Materiale: acciaio classe 8.8

S361

DIN 508R - UNI 5531

Blanks T-Nuts

Material: steel class 8.8



Code	D	A	B	C		gr
S361.00008	7,7	13x13	10	6	8	10
S361.00010	9,7	15x15	12	6	10	16
S361.00012	11,7	18x18	14	7	12	27
S361.00014	13,7	22x22	16	8	14	50
S361.00016	15,7	25x25	18	9	16	70
S361.00018	17,7	28x28	20	10	18	95
S361.00020	19,7	32x32	24	12	20	150
S361.00022	21,7	35x35	28	14	22	210
S361.00024	23,7	40x40	32	16	24	300
S361.00028	27,7	44x44	36	18	28	430
S361.00032	31,6	50x50	40	20	32	630
S361.00036	35,6	54x54	44	22	36	800
S361.00042	41,6	65x65	52	26	42	1410

N.B. : Si eseguono su richiesta misure non a catalogo

N.B. : Other sizes can be supplied on request



S362

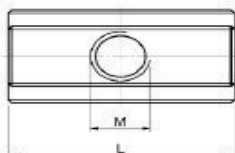
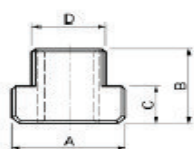
No. 508 L

Tasselli per cave a "T" doppia lunghezza

Materiale: acciaio classe 8.8

Extended nuts for T-slots

Material: steel class 8.8



S363

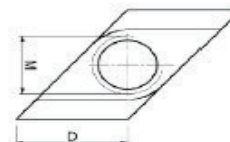
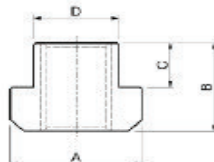
No. 510


Tasselli per cave romboidali

Materiale: acciaio classe 8.8


Nuts for T-slots "Rhombus"

Material: steel class 8.8



Code	M	D	L	A	B	C		gr
S362.06008	6	7,7	26	13	10	5	8	14
S362.08010	8	9,7	30	15	12	6	10	30
S362.10012	10	11,7	36	18	14	7	12	49
S362.12014	12	13,7	44	22	16	8	14	82
S362.14016	14	15,7	50	25	18	9	16	120
S362.16018	16	17,7	56	28	20	10	18	170
S362.18020	18	19,7	64	32	24	12	20	260
S362.20022	20	21,7	70	35	28	14	22	360
S362.22024	22	23,7	80	40	32	16	24	535
S362.24028	24	27,7	88	44	36	18	28	730
S362.27032	27	31,6	100	50	40	20	32	1090
S362.30036	30	35,6	108	54	44	22	36	1390

N.B. : Si eseguono su richiesta misure non a catalogo

Code	M	D	A	B	C		gr
S363.10012	10	11,7	18	14	7	12	14
S363.10014	10	13,7	22	16	8	14	27
S363.12014	12	13,7	22	16	8	14	22
S363.14016	14	15,7	25	18	9	16	33
S363.10018	10	17,7	28	20	10	18	64
S363.16018	16	17,7	28	20	10	18	46
S363.16020	16	19,7	32	24	12	20	79
S363.18020	18	19,7	32	24	12	20	70
S363.16022	16	21,7	35	28	14	22	119
S363.20022	20	21,7	35	28	14	22	98
S363.16028	16	27,7	44	36	18	28	278
S363.20028	20	27,7	44	36	18	28	240
S363.24028	24	27,7	44	36	18	28	215
S363.30036	30	35,6	54	44	22	36	430

N.B. : Other sizes can be supplied on request