



2019

S210

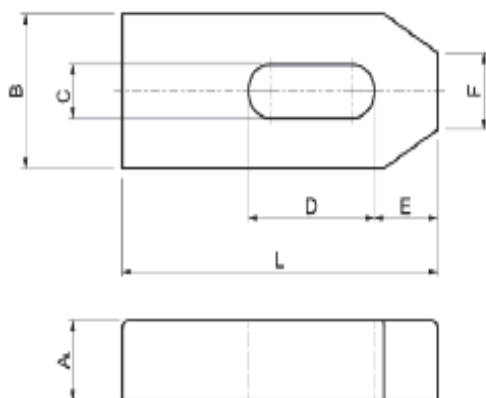
DIN 6314

Staffe semplici

Materiale: Acciaio da bonifica verniciato
R. > 700 N/mm².

Standard clamps

Material: Hardened painted steel
R. > 700 N/mm².



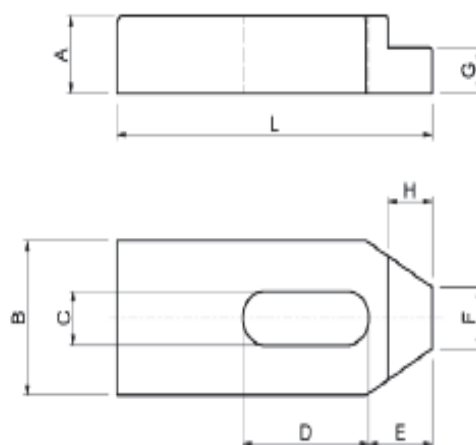
S211

Staffe semplici ridotte

Materiale: Acciaio da bonifica verniciato
R. > 700 N/mm².

Shaped standard clamps

Material: Hardened painted steel
R. > 700 N/mm².



Code	A	B	L	C	D	E	F		gr
S210.07050	10	20	50	7	20	10	8	6	65
S210.09060	12	25	60	9	22	13	10	8	115
S210.11080	15	30	80	11	30	15	12	10	225
S210.14100	20	40	100	14	40	21	14	12-14	500
S210.14125	20	40	125	14	50	21	14	12-14	620
S210.14160	20	40	160	14	65	21	14	12-14	815
S210.18125	25	50	125	18	45	26	18	16-18	980
S210.18160	25	50	160	18	65	26	18	16-18	1260
S210.18200	25	50	200	18	80	26	18	16-18	1600
S210.22160	30	60	160	22	60	30	22	20-22	1850
S210.22200	30	60	200	22	80	30	22	20-22	2300
S210.26200	30	70	200	26	80	35	26	24	2650
S210.26250	30	70	250	26	105	35	26	24	3300
S210.34250	40	80	250	34	100	45	34	27-30	5000
S210.34315	40	80	315	34	130	45	34	27-30	6200

N.B. : Si eseguono su richiesta misure non a catalogo

Code	G	A	B	L	C	D	E	F	H		gr
S211.07050	6	10	20	50	7	20	10	8	7	6	60
S211.09060	7	12	25	60	9	22	13	10	10	8	140
S211.11080	9	15	30	80	11	30	15	12	9	10	220
S211.14100	12	20	40	100	14	40	21	14	12	12-14	480
S211.14125	12	20	40	125	14	50	21	14	12	12-14	615
S211.14160	12	20	40	160	14	65	26	14	12	12-14	800
S211.18125	15	25	50	125	18	45	26	18	15	16-18	960
S211.18160	15	25	50	160	18	65	26	18	15	16-18	1230
S211.18200	15	25	50	200	18	80	26	18	15	16-18	1550
S211.22160	20	30	60	160	22	60	30	22	20	20-22	1800
S211.22200	20	30	60	200	22	80	30	22	20	20-22	2200
S211.26200	20	30	70	200	26	80	35	26	25	24	2450
S211.26250	20	30	70	250	26	105	35	26	25	24	3200
S211.34250	25	40	80	250	34	100	45	34	25	27-30	4800
S211.34315	25	40	80	315	34	130	45	34	25	27-30	6000

N.B. : Other sizes can be supplied on request



2019

S220

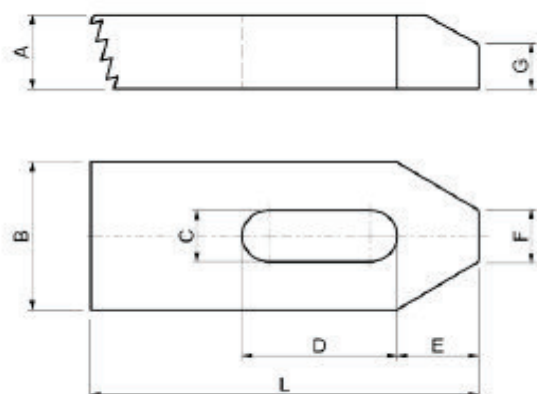
DIN 6314Z

Staffe dentate

Materiale: Acciaio da bonifica verniciato
R. > 700 N/mm².

Toothed clamps

Material: Hardened painted steel
R. > 700 N/mm².



S230

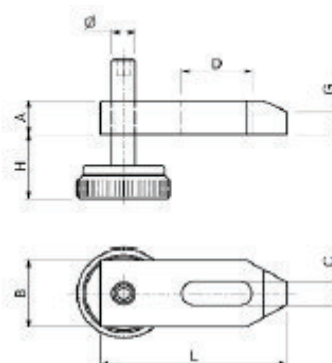
DIN 6314V

Staffe regolabili con vite passo fine

Materiale: Acciaio da bonifica verniciato
R. > 700 N/mm².

Adjustable clamps with fine pitch screw

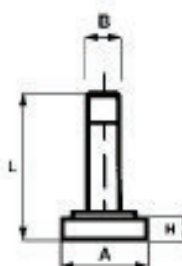
Material: Hardened painted steel
R. > 700 N/mm².



Code	A	B	L	H	C	D	Ø	G		gr
S230.11080	15	30	80	8-28	11	30	M10	10	10	345
S230.14100	20	40	100	10-32	14	40	M12	12	12-14	680
S230.18125	25	50	125	13-40	18	45	M16	15	16-18	1185
S230.22160	30	60	160	18-60	22	60	M20	18	20-22	2030

Code	A	B	L	C	D	E	F	G		gr
S220.07050	10	20	50	7	20	10	8	6	6	55
S220.09060	12	25	60	9	22	13	10	8	8	125
S220.11080	15	30	80	11	30	15	12	10	10	205
S220.14100	20	40	100	14	40	21	14	12	12-14	445
S220.18125	25	50	125	18	45	26	18	15	16-18	930
S220.22160	30	60	160	22	60	30	22	18	20-22	1700
S220.26200	30	70	200	26	80	35	26	18	24	2500

N.B. : Si eseguono su richiesta misure non a catalogo



Viti ricambio (Spare screws)

Code	A	B	L	H	gr
S231.00010	40	M10	60	8	130
S231.00012	45	M12	60	8	210
S231.00016	45	M16	70	8	245
S231.00020	45	M20	80	8	300

N.B. : Other sizes can be supplied on request

S240

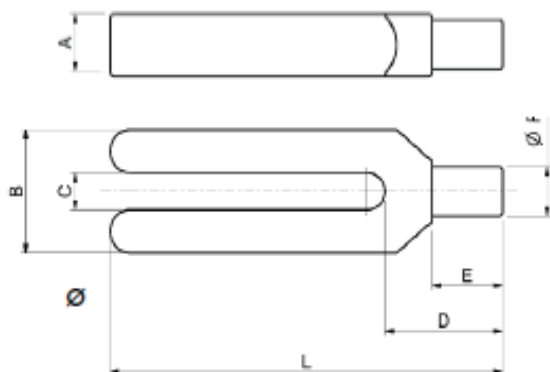
DIN 6315 C

Staffe a forcella con gambo cilindrico

Materiale: Acciaio da bonifica verniciato
R. > 600 N/mm².

Forked clamps with cylindrical shank

Material: Hardened painted steel
R. > 600 N/mm².



S250

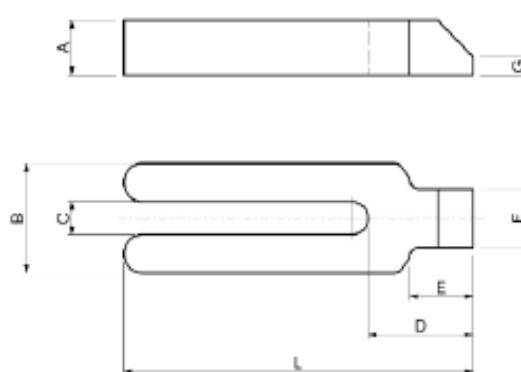
DIN 6315 GN


Staffe a forcella con nasello

Materiale: Acciaio da bonifica verniciato
R. > 600 N/mm².


Forked clamps with nib

Material: Hardened painted steel
R. > 600 N/mm².



Code	A	B	L	C	D	E	F		gr
S240.09100	15	30	100	9	30	18	12	8	205
S240.11125	20	30	125	11	36	24	16	10	335
S240.14160	25	40	160	14	45	30	20	12-14	720
S240.14200	25	40	200	14	45	30	20	12-14	920
S240.18200	30	50	200	18	55	36	24	16-18	1310
S240.18250	30	50	250	18	55	36	24	16-18	1640
S240.22250	40	60	250	22	65	45	30	20-22	2610
S240.22315	40	60	315	22	65	45	30	20-22	3300
S240.26250	40	70	250	26	80	56	38	24	3100
S240.26315	40	70	315	26	80	56	38	24	3900
S240.34315	50	80	315	34	85	56	45	27-30	5500
S240.34400	50	80	400	34	85	56	45	27-30	6900

N.B. : Si eseguono su richiesta misure non a catalogo

Code	A	B	L	C	D	E	F	G		gr
S250.09100	15	30	100	9	32	18	16	5	8	225
S250.11125	20	30	125	11	38	24	20	6	10	360
S250.14160	25	40	160	14	47	30	25	7	12-14	770
S250.14200	25	40	200	14	47	30	25	7	12-14	950
S250.18200	30	50	200	18	57	36	28	8	16-18	1420
S250.18250	30	50	250	18	57	36	28	8	16-18	1700
S250.22250	40	60	250	22	68	45	35	10	20-22	2790
S250.22315	40	60	315	22	68	45	35	10	20-22	3480
S250.26250	40	70	250	26	83	56	43	10	24	3320
S250.26315	40	70	315	26	83	56	43	10	24	4270
S250.34315	50	80	315	34	88	56	50	12	27-30	5700
S250.34400	50	80	400	34	88	56	50	12	27-30	7250

N.B. : Other sizes can be supplied on request



2019

S260

DIN 6316

Staffe a gomito

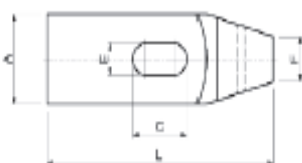
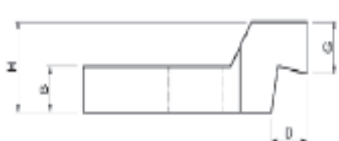
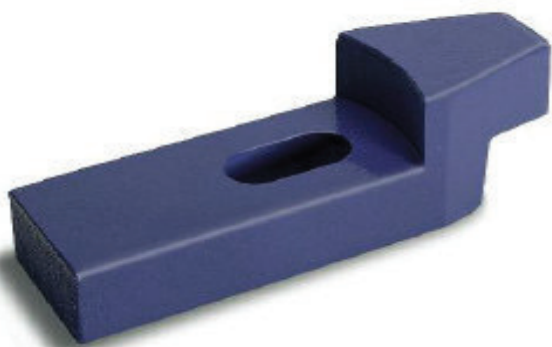
Il pregio dell'articolo sta nell'essere prodotto tramite la fresatura di un blocco d'acciaio (non è quindi piegato).

Materiale: acciaio da bonifica verniciato R. > 700 N/mm².

Cranked clamps

This article is produced milling a steel block (it is not produced by bending).

Material: Hardened painted steel R. > 700 N/mm².



S270

DIN 6315B

Staffe a forcella con smusso

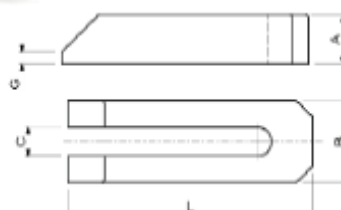
Il pregio dell'articolo sta nell'essere prodotto tramite la fresatura di un blocco d'acciaio (non è quindi piegato).

Materiale: acciaio da bonifica verniciato R. > 600 N/mm².

Forked clamps with bevel

This article is produced milling a steel block (it is not produced by bending).

Material: Hardened painted steel R. > 600 N/mm².



Code	A	B	L	C	E	D	F	G	H		gr
S260.14125	40	20	125	30	14	20	20	23	40	12-14	750
S260.18160	50	25	160	40	18	25	25	28	50	16-18	1510
S260.18200	50	25	200	60	18	25	25	28	50	16-18	1790
S260.22160	60	30	160	40	22	30	30	35	60	20-22	2190
S260.22200	60	30	200	60	22	30	30	35	60	20-22	2700
S260.26200	70	35	200	50	26	35	35	38	70	24	3660
S260.26250	70	35	250	75	26	35	35	38	70	24	4560

N.B.: Si eseguono su richiesta misure non a catalogo.

Code	A	B	L	C	G		gr
S270.07060	12	20	60	7	3	6	70
S270.09080	15	25	80	9	4	8	150
S270.11100	20	30	100	11	5	10	270
S270.14125	25	40	125	14	6	12-14	590
S270.14160	25	40	160	14	6	12-14	760
S270.14200	25	40	200	14	6	12-14	970
S270.18160	30	50	160	18	8	16-18	1160
S270.18200	30	50	200	18	8	16-18	1400
S270.18250	40	50	250	18	10	16-18	2330
S270.22200	40	50	200	22	10	20-22	1700
S270.22250	40	60	250	22	10	20-22	2880
S270.22315	40	60	315	22	10	20-22	3530
S270.26200	40	70	200	26	10	24	2680
S270.26250	40	70	250	26	10	24	3370
S270.26315	40	70	315	26	10	24	4220
S270.34250	50	80	250	34	12	27-30	4480
S270.34315	50	80	315	34	12	27-30	5600
S270.34400	50	80	400	34	12	27-30	7150
S270.40400	60	100	400	40	12	36	11700
S270.40600	60	100	600	40	12	36	17300

N.B.: Other sizes can be supplied on request

S280

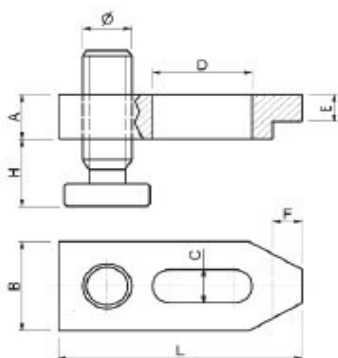
DIN 6314AV

Staffe regolabili con vite passo quadro

Materiale: Acciaio da bonifica verniciato
R. > 700 N/mm².

Adjustable clamps with square thread screw

Material: Hardened painted steel
R. > 700 N/mm².



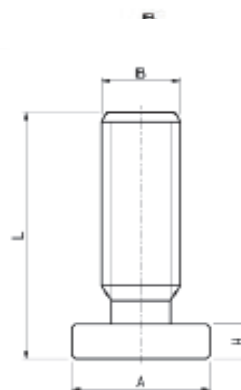
S281


Viti di ricambio per staffe

Filetto TPN passo quadro.
Materiale: 35 SMnPb10 UNI 4838
Classe 8.8

Spare screws for clamps

TPN thread square pitch
Material: 35 SMnPb10 UNI 4838
Class 8.8



Code	A	B	L	H	C	D	Ø	E	F		gr
S280.14100	20	40	100	15-50	15	40	20x4	12	12	12-14	620
S280.14125	20	40	125	15-50	15	45	20x4	12	12	12-14	770
S280.14160	20	40	160	15-50	15	60	20x4	12	12	12-14	950
S280.18125	25	50	125	15-70	19	45	20x4	15	15	16-18	1090
S280.18160	25	50	160	15-70	19	60	30x6	15	15	16-18	1640
S280.18200	25	50	200	15-70	19	80	30x6	15	15	16-18	1970
S280.22160	30	60	160	15-70	23	60	30x6	15	20	20-22	2120
S280.22200	30	60	200	15-70	23	80	30x6	15	20	20-22	2570
S280.26200	40	70	200	15-70	27	80	30x6	25	23	24	3700
S280.26250	40	70	250	15-70	27	100	30x6	25	23	24	4620
S280.26300	40	70	300	15-70	27	100	30x6	25	23	24	5740

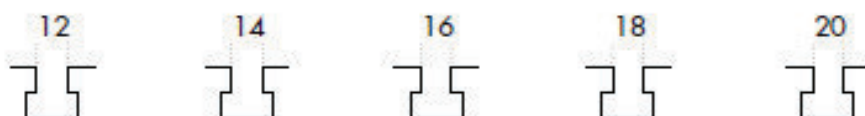
N.B. : Si eseguono su richiesta misure non a catalogo

Code	A	B	L	H	gr
S281.20004	35	20x4	70	10	190
"	"	"	"	"	"
"	"	"	"	"	"
"	"	"	"	"	"
S281.30006	45	30x6	100	15	540
"	"	"	"	"	"
"	"	"	"	"	"
"	"	"	"	"	"
S281.30006.A	70	30x6	125	15	1050
"	"	"	"	"	"
"	"	"	"	"	"

N.B. : Other sizes can be supplied on request



2019

Staffaggi assortiti**S410****Assorted
clamping tools**

Cod. ➔	S410.00012	S410.00014	S410.00016	S410.00018	S410.00020	Description
Descrizione	Compos. <input type="checkbox"/>	Compos. <input type="checkbox"/>	Compos. <input type="checkbox"/>	Compos. <input type="checkbox"/>	Compos. <input type="checkbox"/>	
Appoggi dentati	S110.00001 2	S110.00001 2	S110.00001 2	S110.00001 2	S110.00001 2	Toothed supports
Appoggi dentati	S110.00002 4	S110.00002 4	S110.00002 4	S110.00002 4	S110.00002 4	Toothed supports
Appoggi dentati	S110.00003 2	S110.00003 2	S110.00003 2	S110.00003 2	S110.00003 2	Toothed supports
Staffe semplici	S210.14100 4	S210.14125 4	S210.18125 4	S210.18125 4	S210.22200 4	Flat clamps
Staffe dentate	S220.14100 4	S220.14100 4	S220.18125 4	S220.18125 4	S220.22160 4	Toothed clamps
Viti testa martello	S310.12080 2	S310.14100 2	S310.16100 4	S310.18150 4	S310.20150 4	T-slot bolts
Viti testa martello	S310.12125 4	S310.14150 4	S310.16150 2	S310.18200 2	S310.20200 2	T-slot bolts
Prigionieri completi	S320.10080 2	S320.12080 2	S320.14100 2	S320.16125 2	S320.18125 2	Studs
Prigionieri completi	S320.10100 2	S320.12160 2	S320.14160 2	S320.16160 2	S320.18160 2	Studs
Dadi prolung.	S350.10030 4	S350.12036 4	S350.14042 4	S350.16048 4	S350.18054 4	Extensions nuts
Dadi alti	S340.12018 6	S340.14021 6	S340.16024 6	S340.18027 6	S340.20030 6	Turned toll nuts
Tasselli per cave	S360.10012 4	S360.12014 4	S360.14016 4	S360.16018 4	S360.18020 4	T-slot nuts
Rondelle	S370.00012 6	S370.00014 6	S370.00016 6	S370.00018 6	S370.00020 6	Washers
Peso kg	10,5	12	17	18	27	Weight kg.
Gassa in legno vuota	S410.BOX01		S410.BOX02		S410.BOX03	Wooden box
Dimensioni	cm. 37 x 32		cm. 47 x 33		cm. 50 x 41	Sizes

N.B. : Si eseguono su richiesta misure non a catalogo

N.B. : Other sizes can be supplied on request